

Adding TDI mode to PRISM

Li Zeng

Advisor: Brian Taylor

Jan.25, 2008

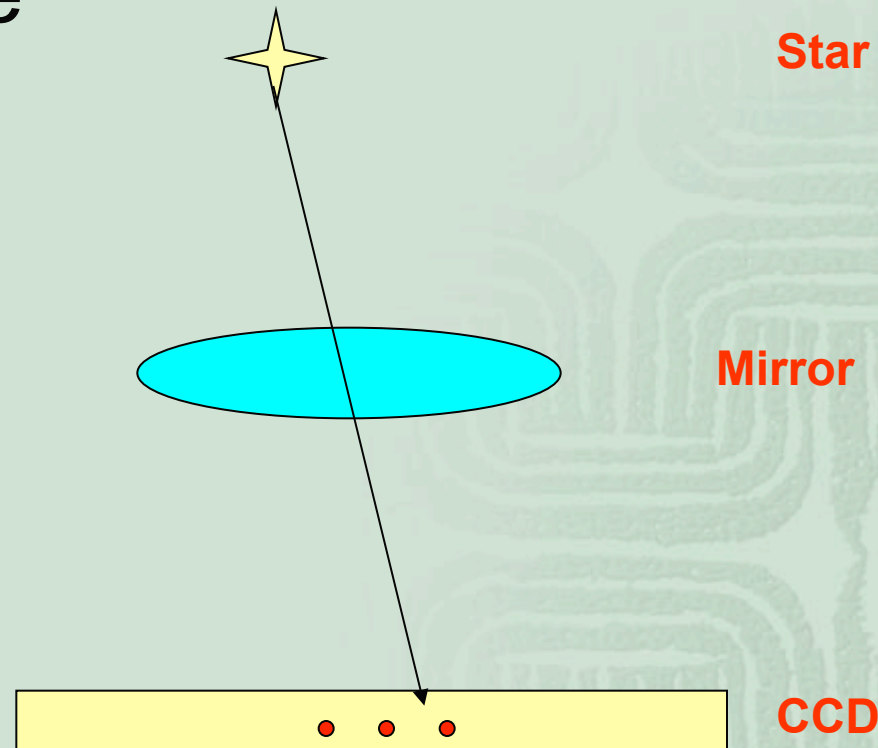
Outline

- What is TDI mode?
- 72” Perkins Telescope and PRISM
- Photon Transfer Curve of PRISM
Read Noise, Gain, Full Well Capacity of PRISM
- CCD images taken in TDI mode on Perkins:
M77, M78, IC 434, NGC 2301
- Acknowledgements

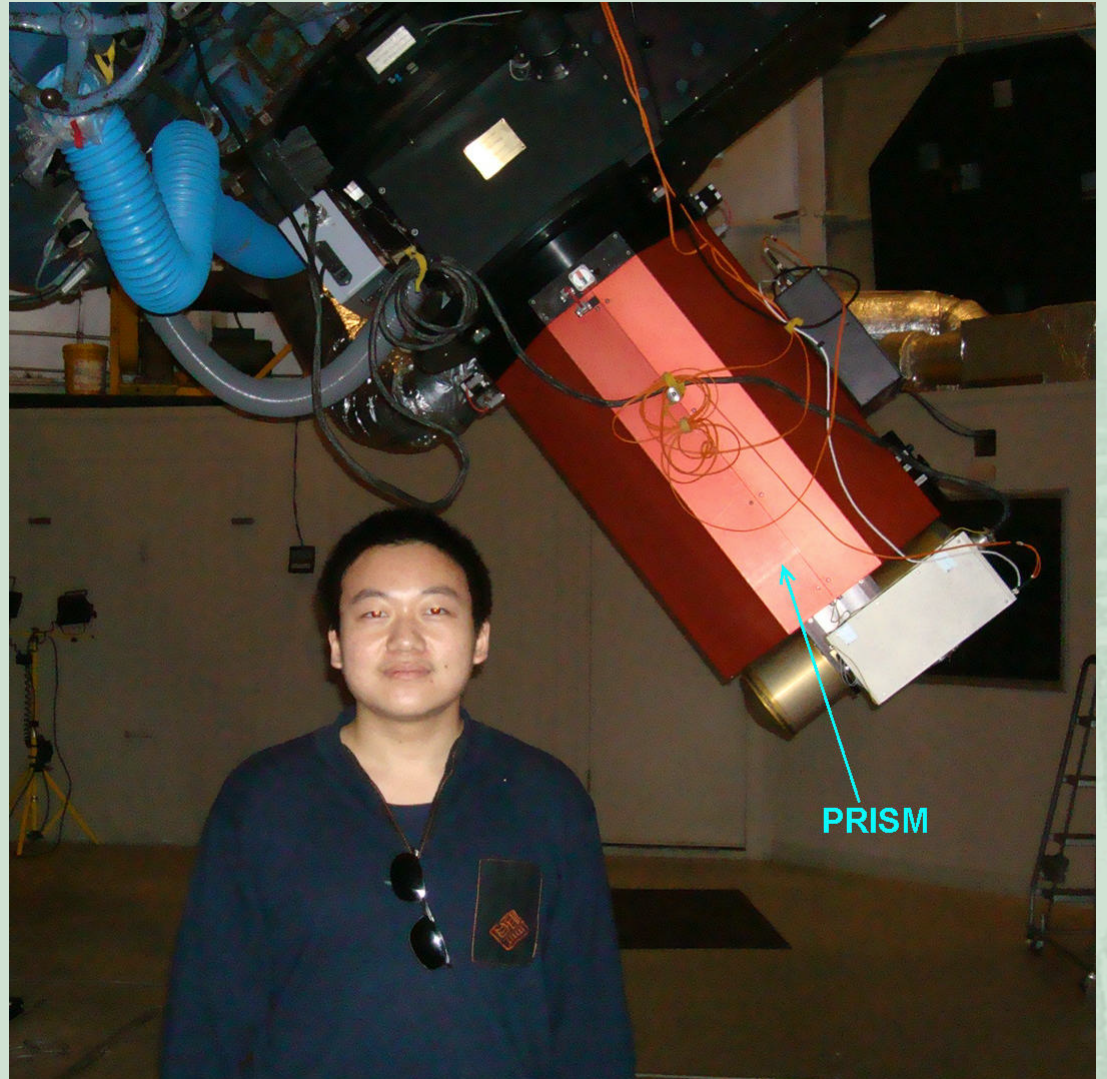


What is TDI mode?

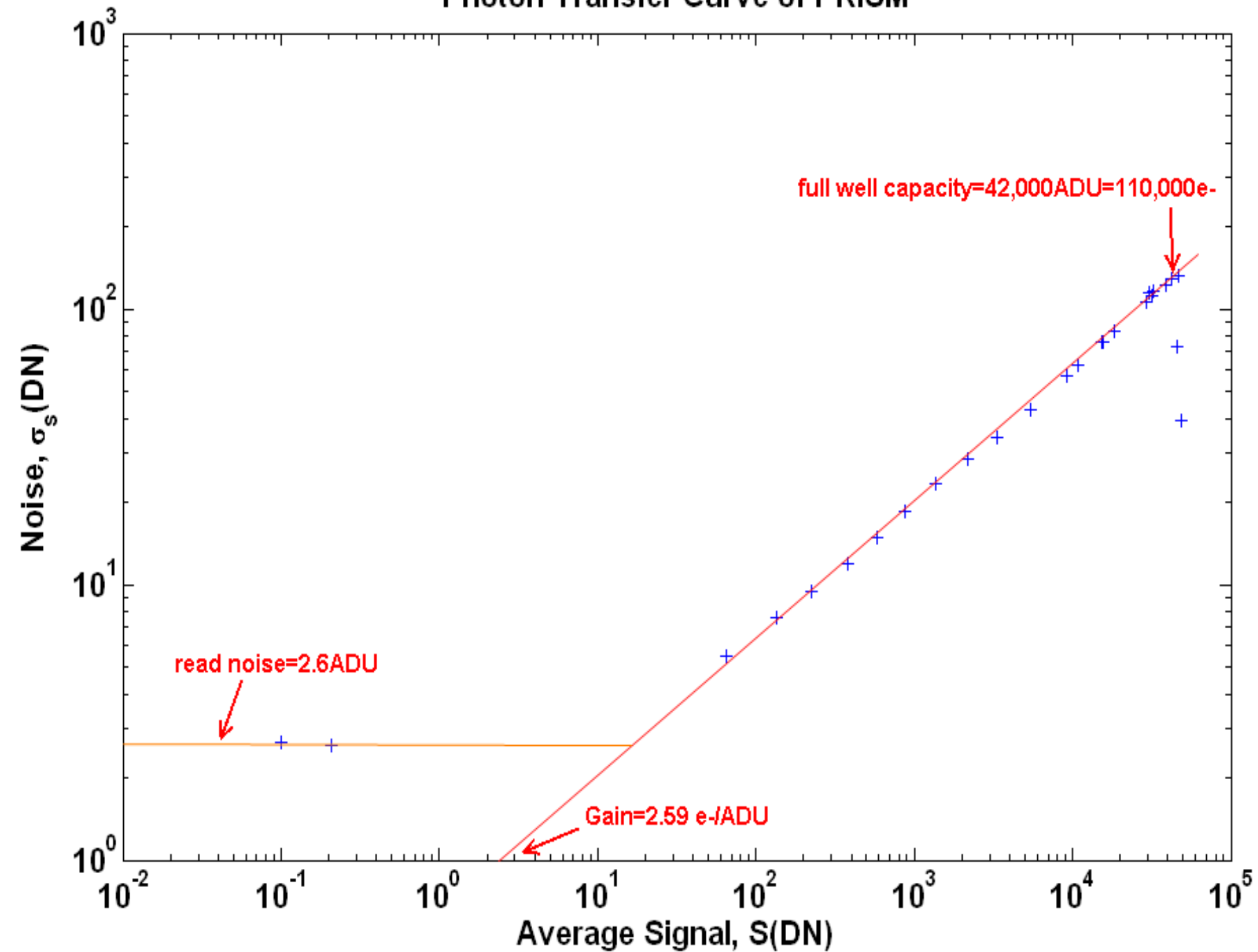
- Time Delay Integration on CCD
- CCD reads out at the same speed the image of the star sweeps on the focal plane of telescope



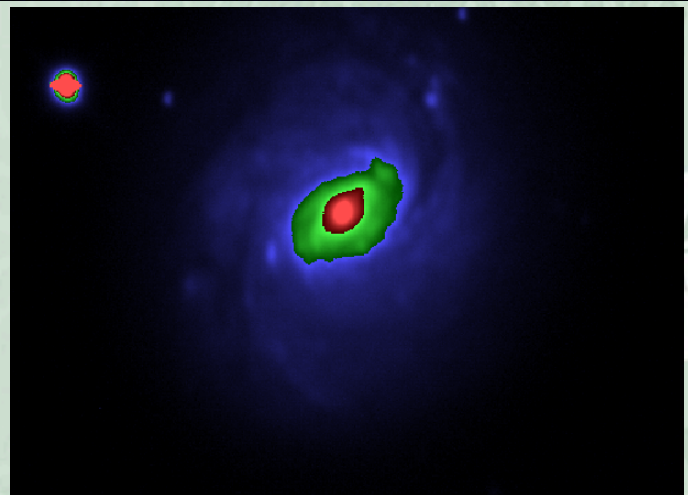
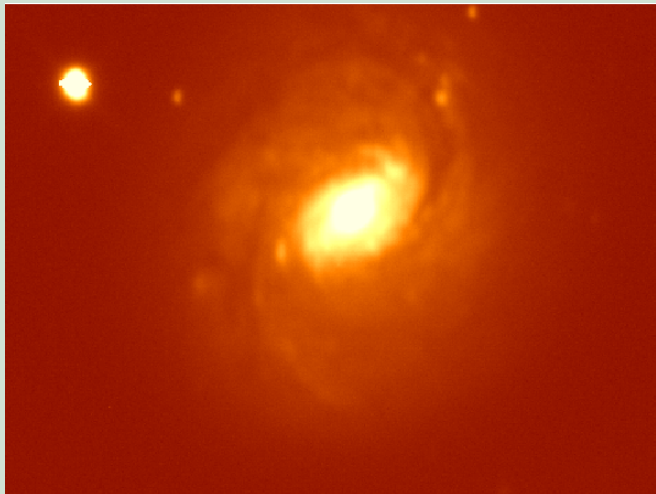
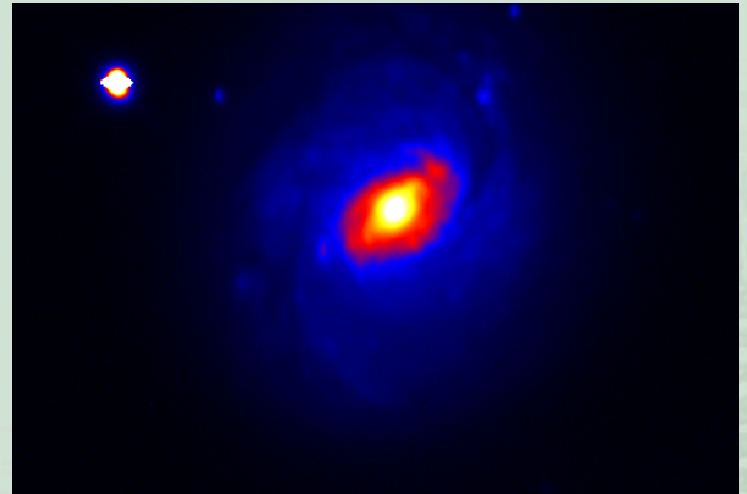
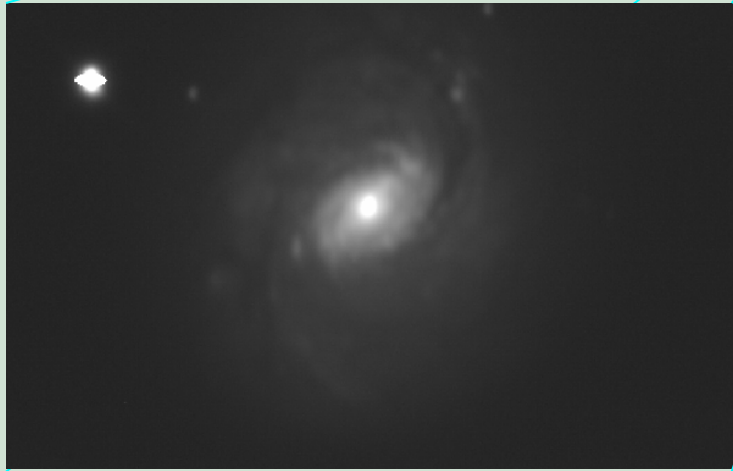
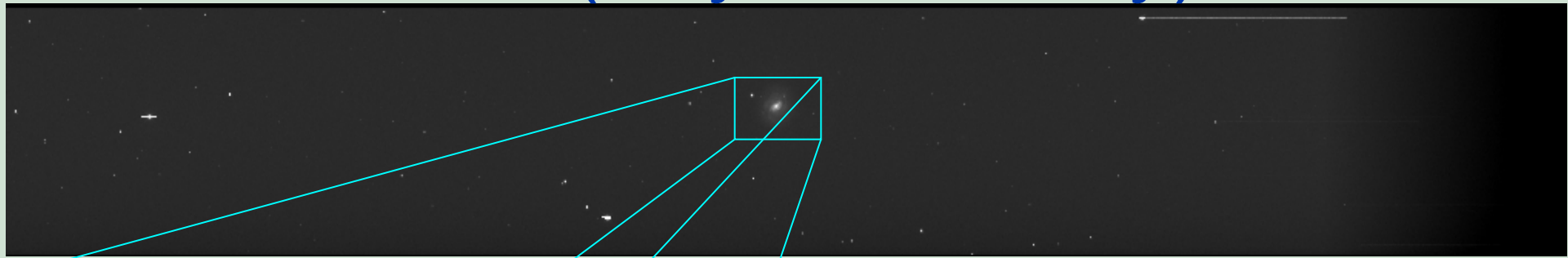
72" Perkins Telescope and PRISM



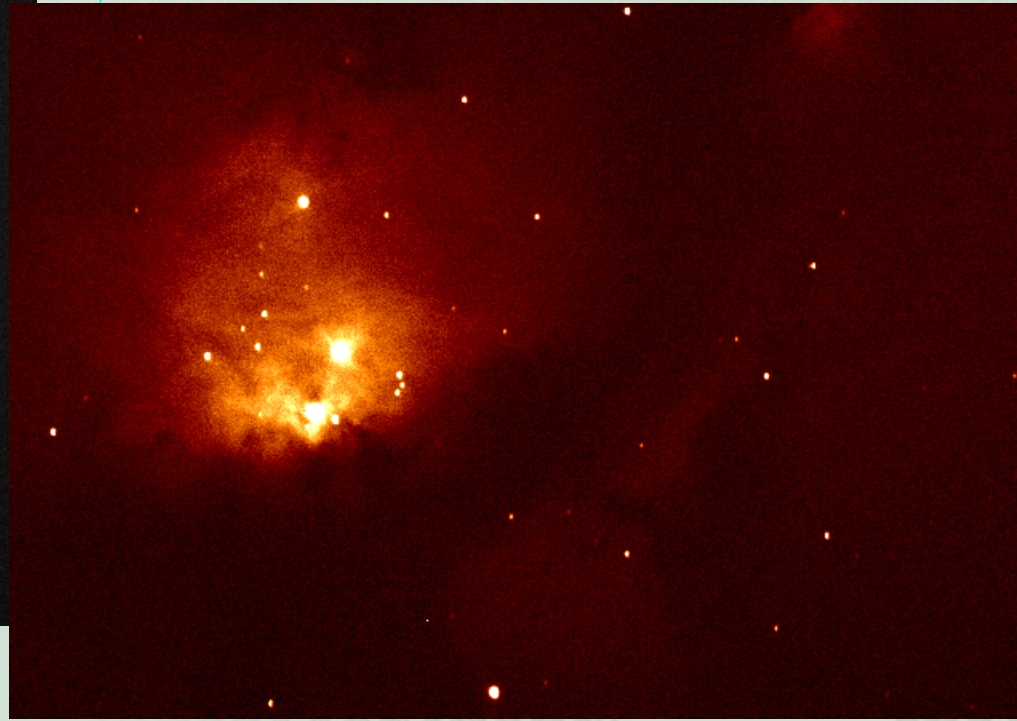
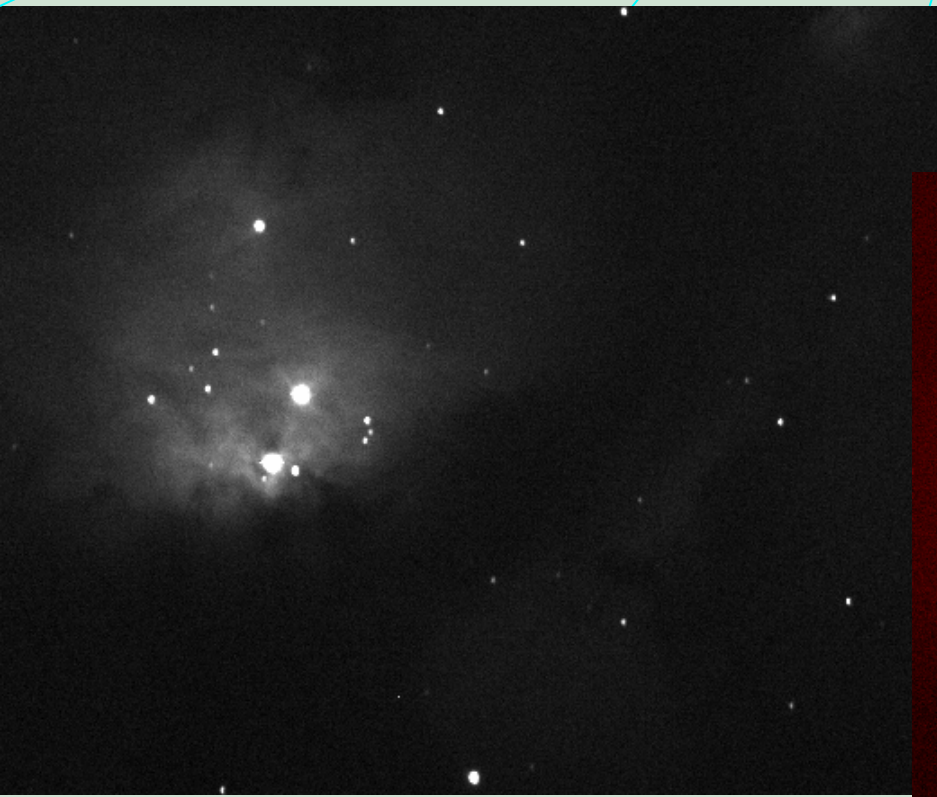
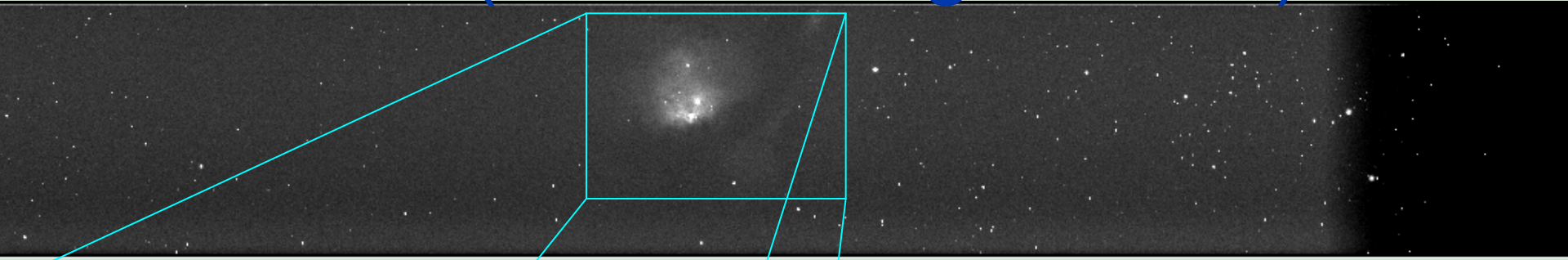
Photon Transfer Curve of PRISM



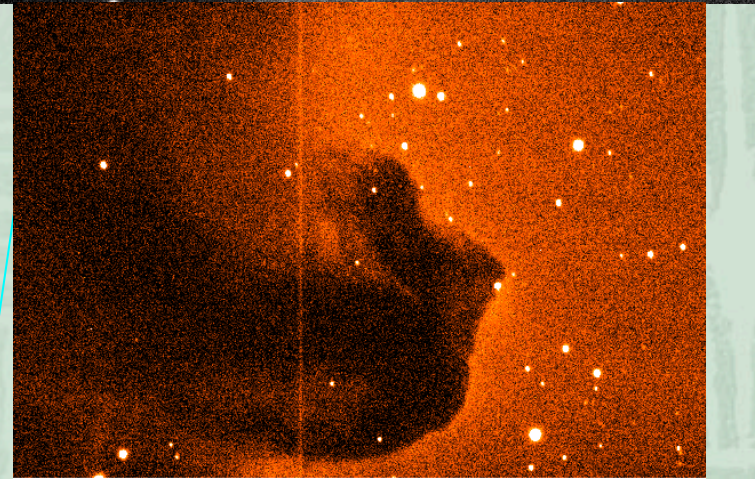
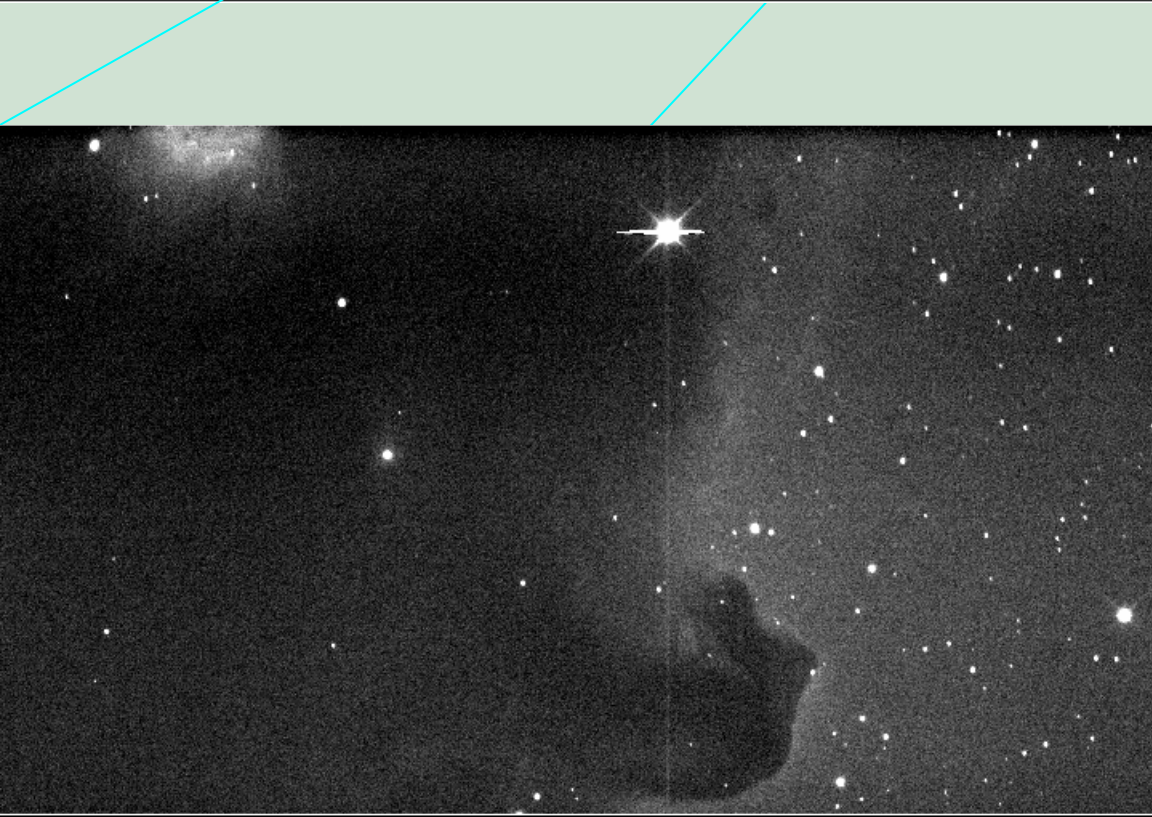
M77 (Seyfert Galaxy)



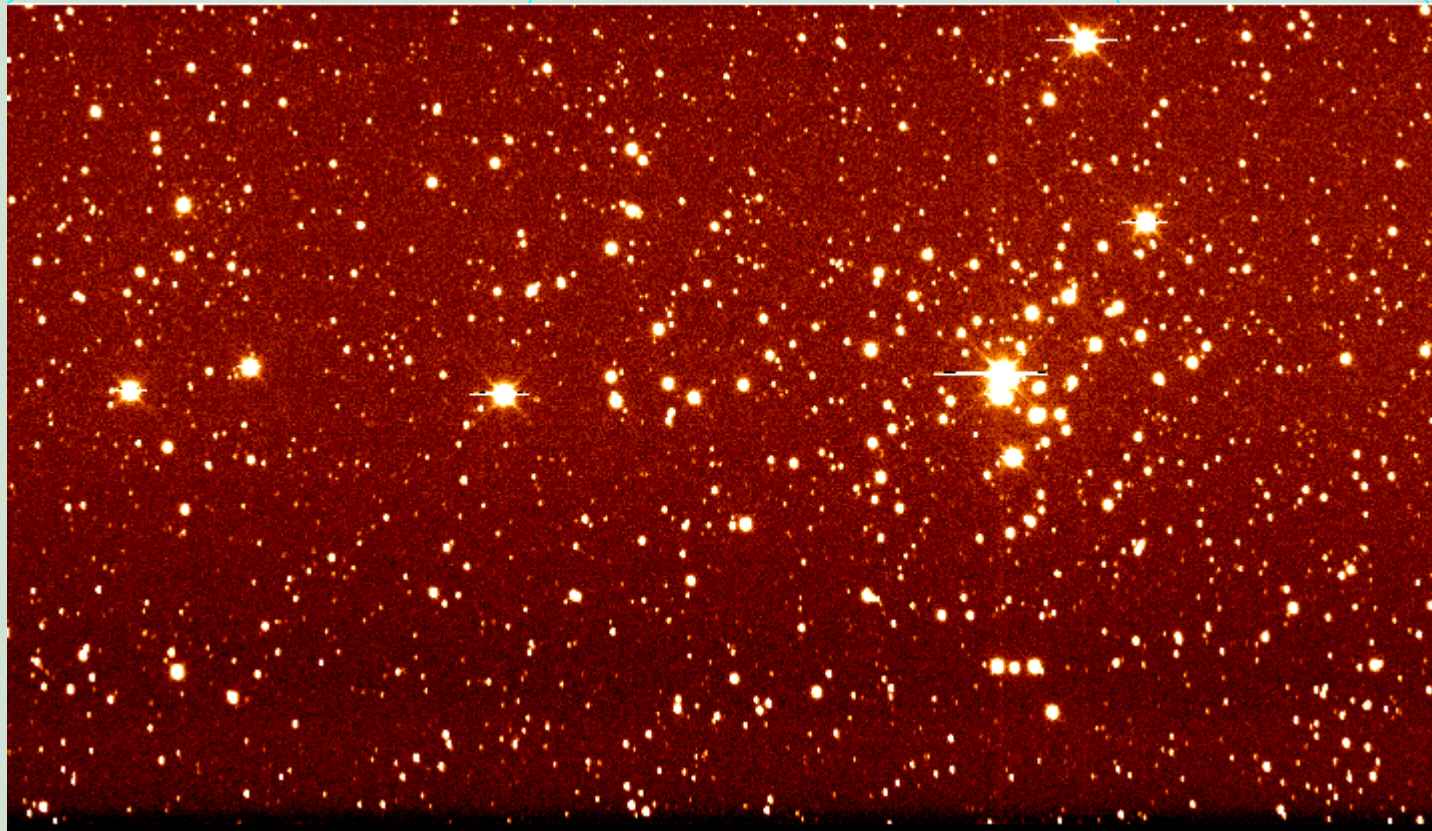
M78 (Star forming Nebula)



IC 434 (Horsehead Nebula)



NGC 2301 (Open Cluster)



Acknowledgements

- Brian Taylor
- Stephen Slivan
- James Elliot
- All astronomers at Lowell, including Bob Millis, Ted Dunham, etc.
- All field camp students

