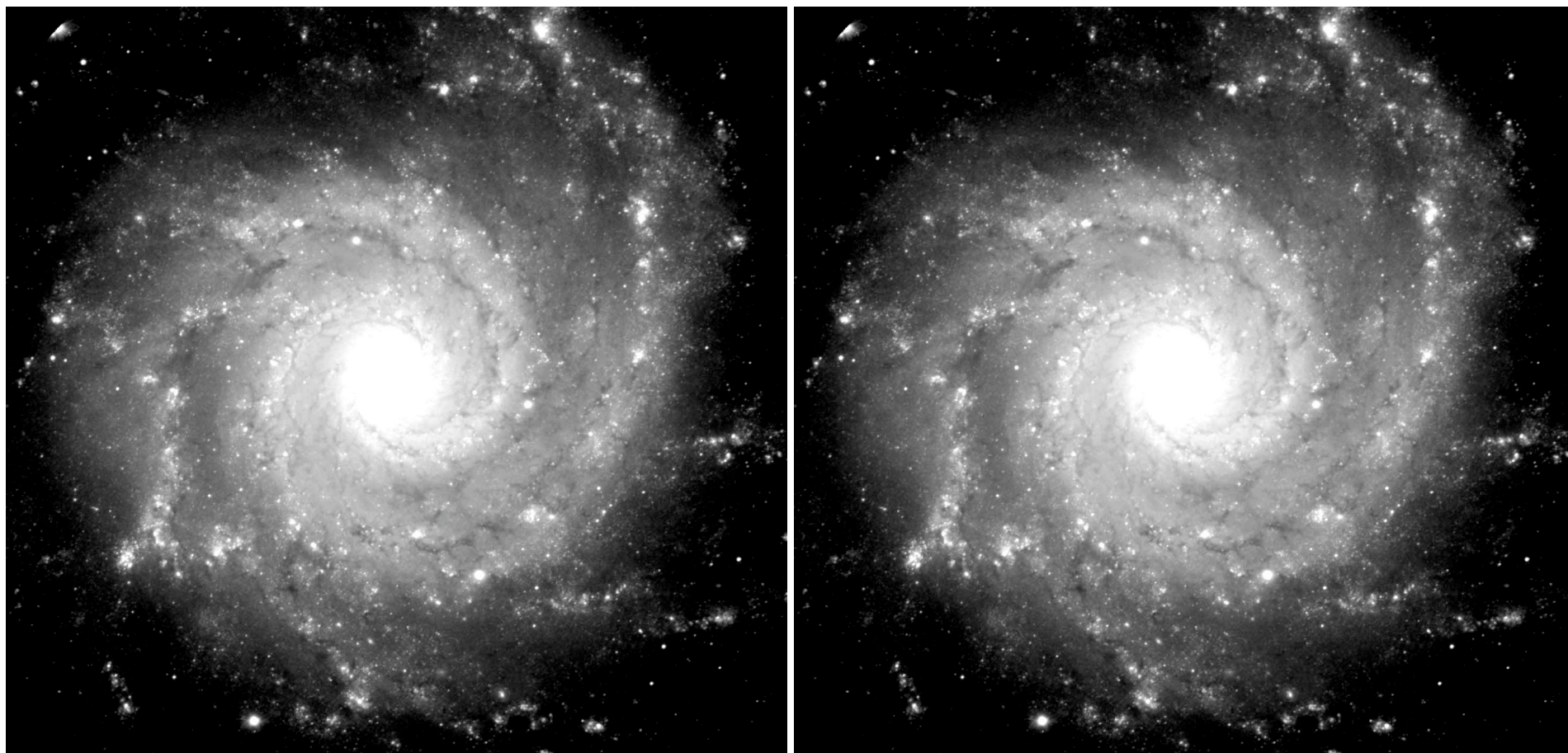


## Template images for Galaxy CDs



Print multiple copies or duplicate using a copy machine.

To attach to CDs: Print on CD-shaped adhesive paper templates

OR: Print on full-sheet adhesive paper and trace out CD shape around galaxy

OR: Print on regular paper, trace and cut out CD shape and attach using tape or glue.

TO ADD TACTILITY: Trace the spiral arms with puff-paint or glue, and insert a cotton ball in the middle of the CD.

*This is NOT an image of the Milky Way. It is spiral galaxy M74, courtesy Gemini Observatory, GMOS Team.*